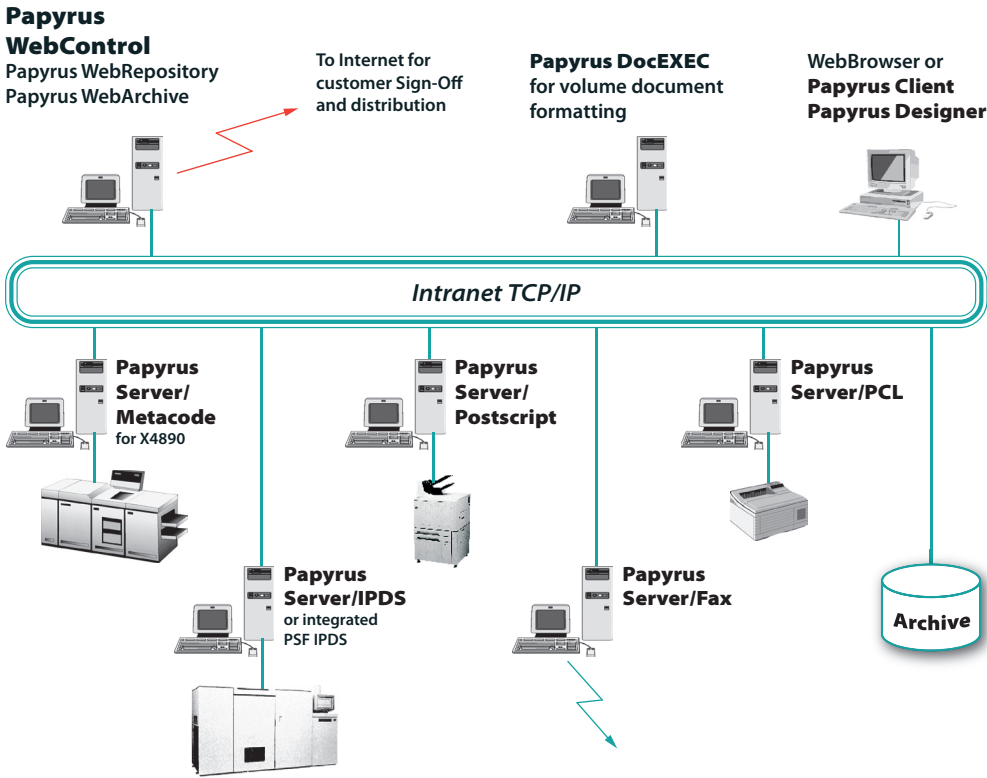


Papyrus WebControl™ 7



Product Description

PapyrusWebControl offers the print, job, spool and queue management across all platforms and multiple output channels.

Papyrus WebControl enables the following applications:

- A complete network print job management solution for in-house print shops, print service or Direct Mail providers.
- A single resource repository with platform independent forms and fonts.
- Manage the complete cycle of a volume production job.
- View, manage and control development, customer sign-off, volume-formatting, print production and the archiving through standard web browsers or the **Papyrus Client/Papyrus Desktop**.
- Server based job control and management.

Papyrus WebControl assembles the renowned **ISIS Papyrus** document products into the most complete printer and system independent document production and distribution solution. It is based on the **Papyrus Objects** infrastructure.

Papyrus WebControl supports Windows 2K/XP/2K3/VISTA/2K8/7, UNIX/Linux and z/OS platforms and all printer types such as IPDS, IJPDS, Xerox Metacode, PS, PCL and archive interfaces.



ISIS PYPYRUS™

Contact

Europe

P: +43-2236-27551
F: +43-2236-21081

America

P: 817-416-2345
F: 817-416-1223

Asia Pacific

P: +65-6339-8719
F: +65-6336-6933

E-mail

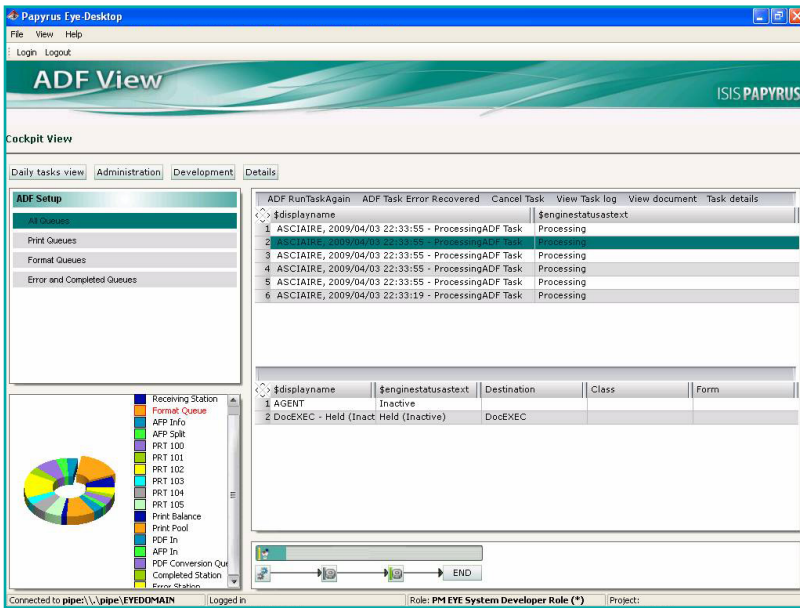
info@isis-papyrus.com

Internet

www.isis-papyrus.com

© 2017, ISIS Papyrus, replaces all previous documentation.

January 1st, 2017



Print Management

- Manage print jobs on all printers with TCP/IP address from any PC in the network
- Manage DocEXEC formatting jobs
- Perform Pagedef - Linemode execution (PageEXEC)
- Support for following printers: AFP to PCL, IPDS, IJPDS, Xerox Metacode, PDF, PS, Fax, TIFF, GIF
- Print following data formats directly: PCL, PS, Metacode, IJPDS
- 'Up and Running' for all **Papyrus Server** modules.

Print Management Options:

Submit any PageEXEC or DocEXEC formatting job from clients to **Papyrus Server**, running on various server platforms within your Intra- or Internet environment.

Papyrus WebControl is built on **Papyrus Objects** written in C++, which provides the perfect tool for cross-platform IT environments.

This Web-enabled technology allows you to use also your browser to access **Papyrus Server** via the Intra/Internet. **Papyrus Objects** is the infrastructural component of Papyrus offering object management in a workflow sense.

Prerequisites

- TCP/IP
- Printing through a Windows printer driver can be done with standard LAN server.
- A server can run on any platform such as AIX, Sun Solaris, HP-UX, Linux, Windows 2K/XP/2K3/VISTA/2K8/7 and z/OS.

Job Management

- Control printer independent documents, which can also be published through CD-ROM/DVD, Fax, e-mail or Internet.
- Manage the complete cycle of a volume production job.
- Create jobs from predefined templates.
- Multistep jobs e.g. DocEXEC-IPDS-Archive.
- Job splitting for parallel processing.
- Starting third party programs.
- Job logging and recovery.

- Remote access to multiple servers from single Operator View (Desktop or Browser)
- Reroute jobs to other queues
- Submit print jobs from local or remote workstations
- Load Balancing of printers
- Best Match job queue criteria

Spool Management Options:

Define customized queues for various jobs, for various spools. User management capabilities allow the user or a workgroup to access queues and jobs that run on the server or mainframe. Include platform queues to be shown and handled on the user panel. Hold output-queues with a simple mouse click. Re-route output spools for printing to channel attached host printers or for printing within a LAN environment. Prioritize spools for faster throughput. Manage and re-route any printer stream from existing JES or other spooling systems.

Spool Management

- Manual and scheduled job submission (local and remote).
- Define customized queues from templates for various jobs and spools.
- User management capabilities allow the user or a workgroup to access queues and jobs that run on one or multiple servers depending on role and privilege
- Hold output queues with a simple mouse click
- Reroute output spools to channel attached printers or LAN attached printers
- Prioritize spools for faster throughput or split big jobs in smaller units and print them in parallel on several printers
- "Drag and drop" job control
- Selection of job priorities
- Job priority e.g. print large jobs last
- Creation of multiple job classes
- User management/multi user enabled

Order Information

Papyrus WebControl™ 7

Training

ISIS Papyrus offers in-house workshops and standard courses for user training.

Maintenance

The Terms and Conditions for ISIS Papyrus Software Products apply. Free service period is 6 months after installation. A maintenance agreement is offered optionally for updates and hotline.