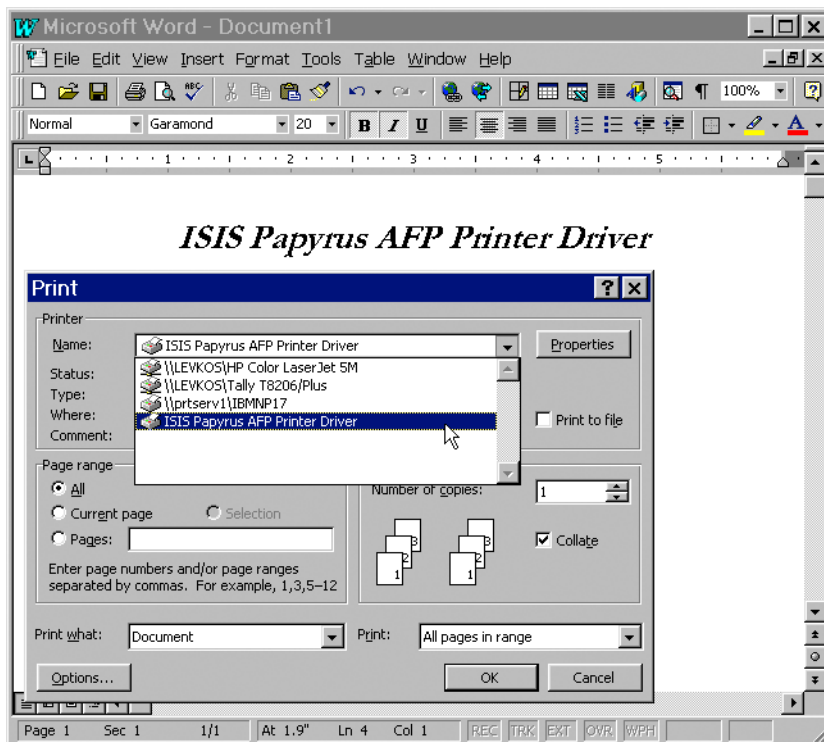




Papyrus AFP PrinterDriver

Integrates documents created under Windows 2K/XP/2K3/VISTA/2K8/7 into the AFP printing world.



Solution Description

The **Papyrus AFP PrinterDriver** offers an effective way to integrate your PC generated documents (e.g. MS-Word, Excel, QuarkXpress, PageMaker, WordPerfect, etc.) into a corporate wide printing strategy. By generating the platform and printer independent AFP document format including document index, advanced processing capabilities become available. This includes bundling of PC generated documents with centralized document automation and management.

The Papyrus Printer Driver also offers to run in image mode (**Papyrus Image Printer Driver**) to create images.

Contact

Europe

P: +43-2236-27551
F: +43-2236-21081

America

P: 817-416-2345
F: 817-416-1223

Asia Pacific

P: +65-6339-8719
F: +65-6336-6933

E-mail

info@isis-papyrus.com

Internet

www.isis-papyrus.com

© 2017, ISIS Papyrus, replaces all previous documentation.

January 1st, 2017

Functions

Creating directly out of Windows applications such as MS-Word:

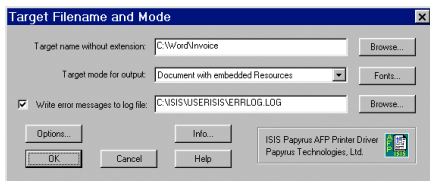
- AFP document files.
- AFP OVERLAYS.
- AFP fonts.
- AFP indices.

Creating images with the Papyrus Image Printer Driver such as:

- GIF
- JPEG
- PNG
- TIF
- MTIFF

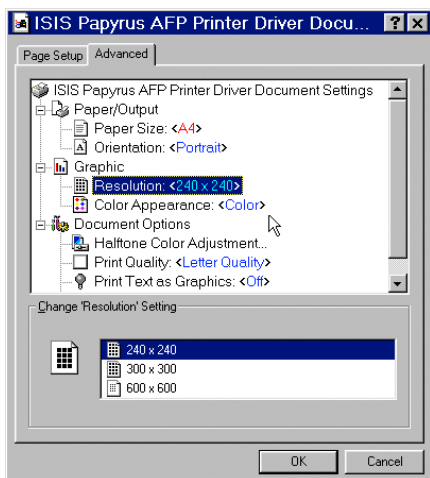
Handling

- Select File/Print and select "Papyrus AFP PrinterDriver" as your target printer.
- Specify the output type (fonts, OVERLAYS, documents) and assign a file name to the target file or send it directly to *Papyrus WebRepository*.



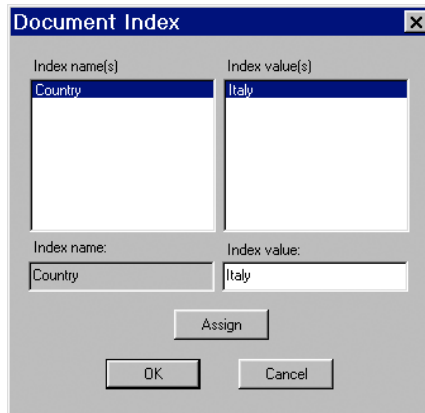
Selecting paper orientation and print resolution

As with any PC printer use "Properties" in the printer dialog.



Document indexing

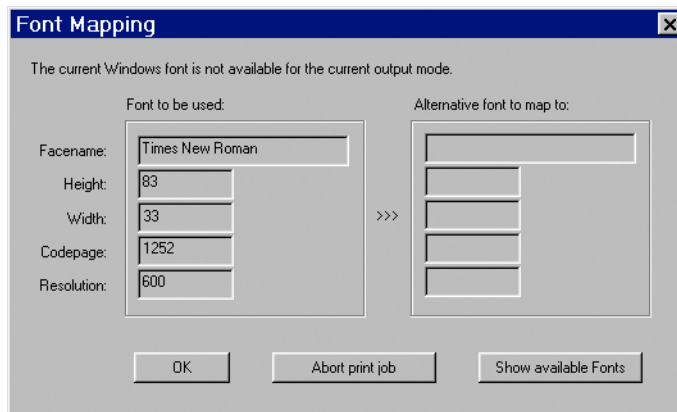
Add AFP indices to the documents for later archiving and postprocessing requirements.



Font mapping

Existing AFP fonts can be automatically mapped to Windows fonts. If corresponding Windows fonts do not exist, an automatically invoked dialog suggests existing fonts to be mapped.

Fonts can be loaded from *Papyrus WebRepository*.



Recommended configuration

- Pentium IV or higher
- 512 MB RAM (1 GB recommended)
- Windows 2K/XP/2K3/VISTA/2K8/7

Restrictions

ISIS does not guarantee that results will be 100% accurate at all times due to the non-standardized PC print interfaces.

Order Information

Papyrus AFP PrinterDriver

Is only available as a *Papyrus Designer Suite* component.

Maintenance

The Terms and Conditions for ISIS Papyrus Software Products apply. Free service period is 6 months after installation. A maintenance agreement is offered optionally for updates and hotline.