

ISIS Papyrus

Focus Report

Integrated Archiving and Web Delivery

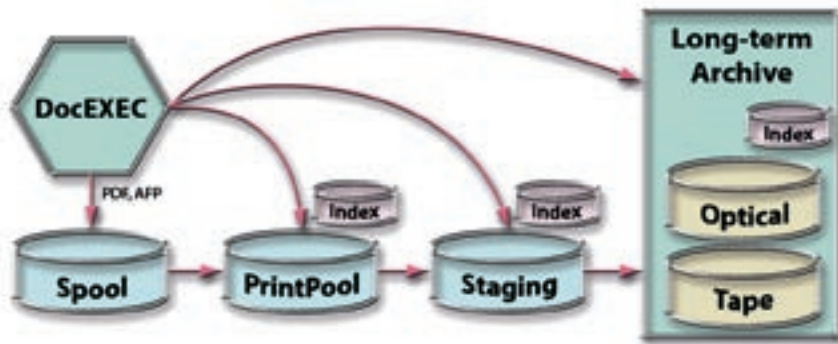


A fully **integrated solution** for Output Management, Web Presentment and Archiving.

- **Document** delivery to the Web
- ■ **Short-term** archiving/staging for customer care
- ■ ■ **Long-term** archiving
- ■ ■ ■ **Interfacing** with third party archiving systems

THE CONCEPT

The Papyrus architecture for Output Management includes the generation of the document index at the time of formatting and not from the spool. The index is used in the *PrintPool* for reprinting, bundling of different document types and for distribution. The index is also needed for *Staging* to allow fast access for customer care as well as in the *Long-term Archive* with Hierarchical Storage Management to disk, tape or optical storage. A third-party archive can be used to store BLOBs. Archive storage is compressed to 1k per page.



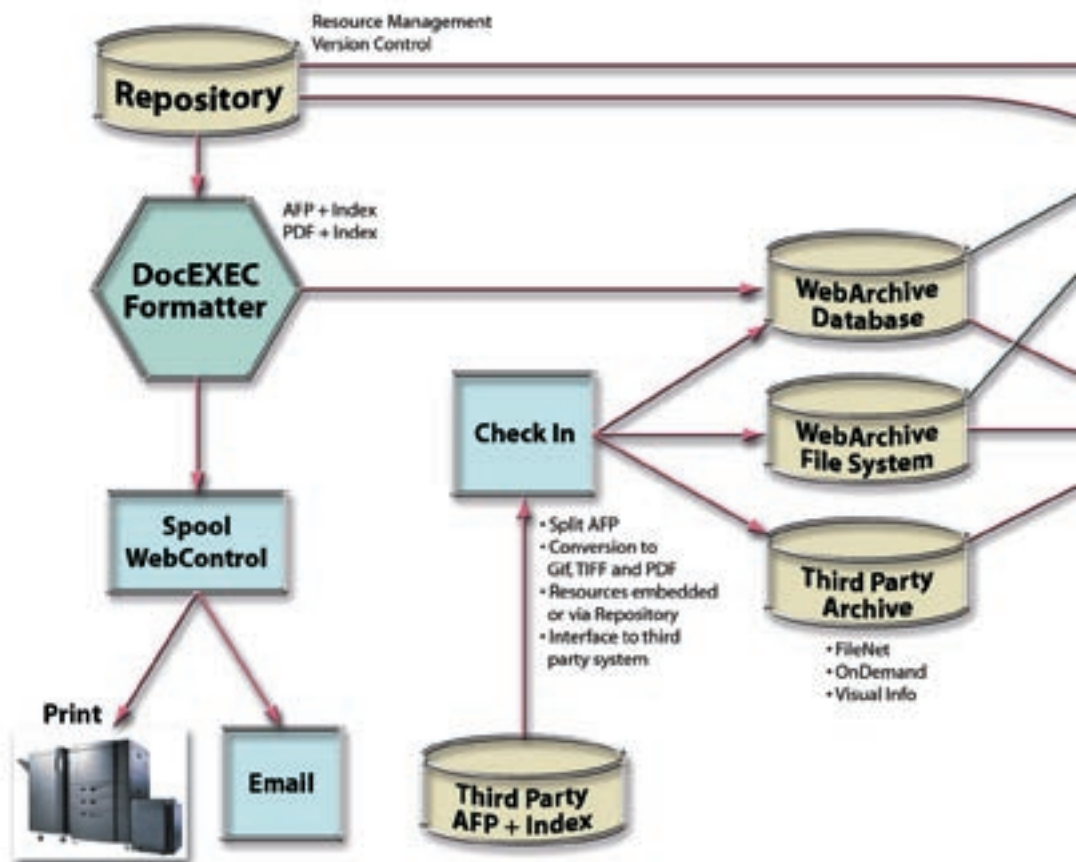
Document viewing options:

PDF, AFP, GIF, TIF

When formatting the document Papyrus generates an electronic final format in AFP and/or PDF with index information. The document is ready to be used in a multi-channel, multi-platform environment. Without additional effort it can be printed to any laser printer, faxed, e-mailed, delivered to the Web and archived. All document elements are developed one time for both print and electronic delivery. Documents look absolutely identical on paper and in the Web browser.

BENEFITS

- A completely integrated solution for Printing, Output Management, Web Delivery and Archiving
- Large cost and time savings: Document elements are developed one time for multi-channel output. The quality of documents on paper and in the Web is absolutely identical.
- Index definition and extraction is simple and effortless
- Platform independent and scalable
- Free choice of operating system and hardware
- Internet and Intranet capable
- Uses any Standard Storage Management products, for example: z/OS, DB/2, HSM, HTTP and Java for Web presentation
- Integration with Imaging and Document Capture
- Compatible with: SOAP (Simple Object Access Protocol)



Deciding which document format to store

The stored document format considerably influences the storage requirements and the access times.

The AFP format size can be compressed to typically 1kb per page. Due to these very small file sizes it is recommended to use AFP as the storage format. *Papyrus WebArchive* offers fast conversion on the fly to PDF or GIF when a document is requested for viewing.

| File format | Size ⁽¹⁾ | Storage space ⁽²⁾ |
|---------------------------------|---------------------|------------------------------|
| AFP (uncompressed/no resources) | 2-5 kB | 1.1 GB |
| PDF (no fonts) | 20-30 kB | 6.1 GB |
| TIFF (300 dpi) | 50-70 kB | 14.1 GB |
| GIF | 60-90 kB | 18.1 GB |

(1) Size per average document page

(2) Storage space requirements for 100,000 documents of 2 pages and an average index size of 1 kB/page

The AFP Resources

AFP resources can be embedded into the AFP file or retrieved from an external library. Embedded resources require larger storage capacities due to duplication. External resources usually require version control, which is easily implemented with *Papyrus Repository*.

Storage Media

DASD, Optical Disk, Tape, CD Rom

Supported platforms and database systems: z/OS: DB2; AIX, SUN Solaris, HP/UX: Oracle, DB/2; WinNT: DB/2, Sybase, SQL Server

Papyrus WebArchive

THE PROCESS

Defining the document index:

The document indexes are simply defined during document development using the *Papyrus Designer*. No coding is required.

Generating the index file:

Papyrus DocEXEC automatically generates the AFP and PDF index records during the production formatting run. Index generation does not influence the formatting speed or cost additional CPU power.

Check In:

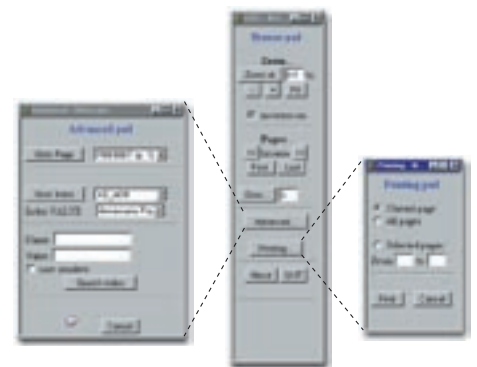
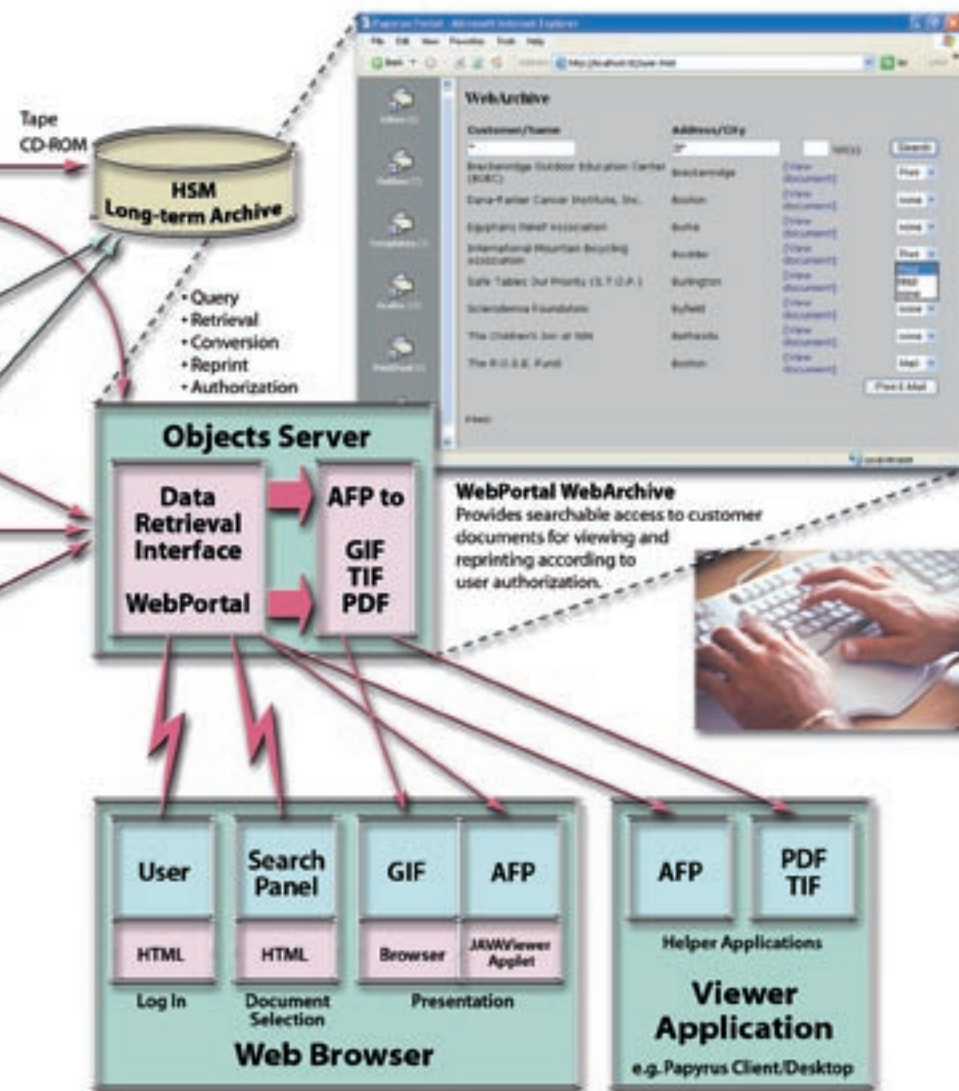
The AFP or PDF file is split into single documents. Based on the index information they are checked into the archive. When using *Papyrus Objects* the splitting process is not required as each document is a single object. At check in the AFP document can optionally be converted to PDF, GIF or TIF. The archive can be a file system, a database system or a third party archive. Papyrus provides an XML interface to third party archives.

VIEWING of documents

Viewing the resulting document with Papyrus is in all cases 100% identical with the printed output. To display the documents, Papyrus does not require substituting the fonts but instead uses the original fonts (and resources) available locally or via HTTP from the library.

Viewing Options:

- *Papyrus WebPortal*: Authorized access for viewing all documents in the browser in PDF and/or AFP format
- *Papyrus Client/AFP Viewer* is a robust AFP viewer capable of loading document files of several 100,000s of pages with fast index search capabilities. It can be installed locally or in the network and is Internet enabled.
- *Papyrus Java AFP Viewer* provides a window displaying the actual AFP document as well as a Browse Pad for zooming and page browsing. The Advanced Pad allows searching of the document and the Print Pad supports printing on a local printer.



- PDF and GIF can be directly viewed in the browser
- TIF can be viewed by third party viewers and in the *Papyrus Portal*.

Papyrus WebArchive for Web Delivery

Customer Care/Web access

Clerks are constantly receiving telephone inquiries and need to quickly call up copies of the customer's documents e. g. bills, that were mailed out and view them while handling the inquiry. A copy of the document can be sent to the customer by using local or central printing, faxing or e-mail.

Web delivery

Companies can provide an Internet based service where all their customers can see their e. g. bills or statements using a browser and optionally print them.

Authorization and Security

■ Authorization is password driven in the Internet browser under control of the HTTP Server

■ Linking to existing authorization systems like LDAP or database controlled authorization

■ Using *Papyrus Desktop* - a role based object meta system with constraints and privileges

INDEXING It is essential to index the documents in order to find them and retrieve them from the archive. The index is defined in the *Papyrus Designer* and generated during the *Papyrus DocEXEC* formatting run. To associate the index with the whole document a GROUP INDEX is defined.



Easy definition of the index in Papyrus Designer



The index file generated by *Papyrus DocEXEC* contains:
GROUP INDEX CUSTOMER = CUST_NUM

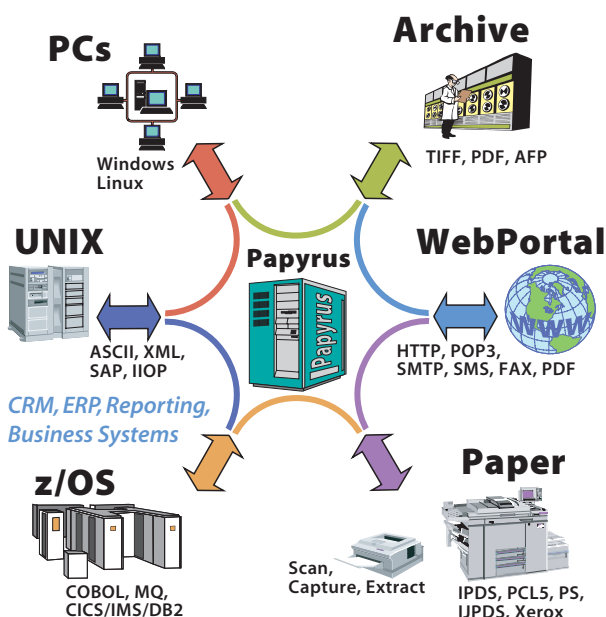
The index can be embedded in the output AFP as Tag Logical Elements or it is generated to an external index file.

The Papyrus Objects Platform unifies all your corporate inbound and outbound business communications into a seamlessly integrated document solution.

Your investment is guaranteed!

Long-term upward compatibility, unmatched seamless platform and output channel independence.

Your Document Switchboard™



Papyrus Document Frameworks

- Automated Document Factory
- Enterprise Application Integration
- Enterprise Output Management
- Enterprise Content Management
- Business Process Management
- Portal and Web Applications
- Change Management
- Correspondence
- Campaign Management
- Print Management
- Capture/Classify/Extract
- Email, Fax

The end of programming. Java not required. XML optional.

ISIS Locations

International Headquarters, Austria

ISIS Information Systems GmbH
ISIS Marketing Service GmbH
ISIS Knowledge Systems GmbH
Alter Wienerweg 12
A-2344 Maria Enzersdorf
T: +43-2236-27551-0
F: +43-2236-21081
E-mail: info@isis-papyrus.com

US Headquarters

ISIS Papyrus America, Inc.
301 Bank St.
Southlake, TX 76092
T: 817-416-2345
F: 817-416-1223

Asia-Pacific Headquarters

ISIS Papyrus Asia Pacific Ltd
9 Temasek Blvd.
#15-03 Suntec City Tower 2
Singapore 038989
T: +65-6339-8719
F: +65-6336-6933

United Kingdom

ISIS Papyrus UK Ltd.
Watership Barn
Kingsclere Business Park
Union Lane, Kingsclere
Hants, RG20 4SW
T: +44-1635-299849
F: +44-1635-297594

Germany

ISIS Papyrus Deutschland GmbH
Heerdter Lohweg 81
40549 Düsseldorf
T: +43-2236-27551-0
F: +43-2236-21081

The Netherlands

ISIS Papyrus Netherlands B.V.
WTC World Trade Center
Zuidplein 36
1077 XV Amsterdam
T: +31-20-799-7716
F: +31-20-799-7801

Italy

ISIS Papyrus Italy Srl
via Monte Navale 11
10015 Ivrea (TO)
T: +39-0125-6455-00
F: +39-0125-6455-150

France

ISIS Papyrus France SARL
21, Rue Vernet
75008 Paris
T: +33-1-47 20 08 99
F: +33-1-47 20 15 43

Spain

ISIS Thot SL.
Sainz de la Calleja, 14
28023 Madrid
T: +34-91-307-78-41
F: +34-91-307-75-08

www.isis-papyrus.com