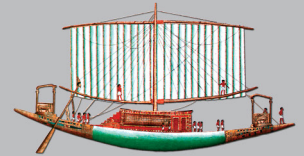
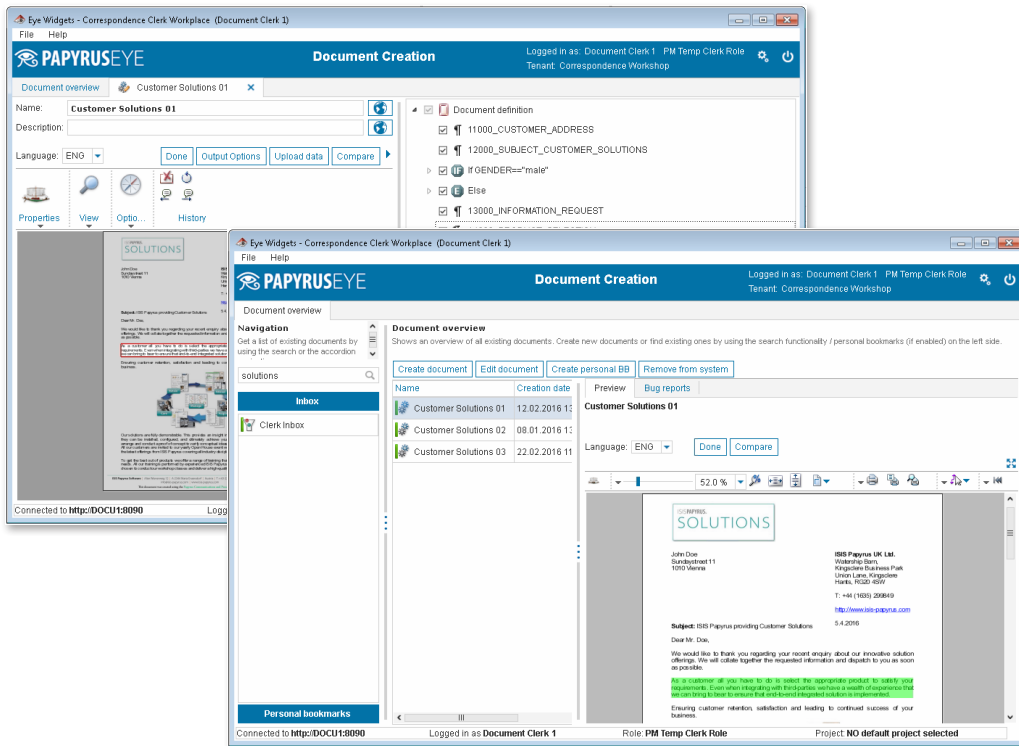


## Papyrus Client 7



ISIS PYPARUS™

*Document Applications for Client/Server are easy to control and manage.*



### Product Description

**Papyrus Client**, in combination with **Papyrus Desktop** is the end-user interface for Client/Server documents, replacing host 3270 terminals for viewing and generation of standardized documents under full application control.

- PC viewing of all AFP formatted documents including AFP raster and outline fonts.
- Interactive formatting of dynamic documents with prompting and text editing.
- Viewing, filling and printing of electronic forms.
- ACIF index support (TLE) and full text search functions.
- Print all AFP documents directly via Windows print drivers to ANY printer.
- AFP print to PCL printers.
- Batch and user interactive formatting of documents at the user PC in AFP and PDF.

**Papyrus Client** offers the same document application functionality for the PC world as with **Papyrus DocEXEC** on any platform. Further opportunities are offered through Windows DDE, Browser Plug-In integration or database connectivity to host or server. With **Papyrus Desktop** full workflow solutions using **Papyrus WebRepository** can be implemented.

### Contact

#### Europe

P: +43-2236-27551  
F: +43-2236-21081

#### America

P: 817-416-2345  
F: 817-416-1223

#### Asia Pacific

P: +65-6339-8719  
F: +65-6336-6933

#### E-mail

info@isis-papyrus.com

#### Internet

www.isis-papyrus.com

© 2016, ISIS Papyrus, replaces all previous documentation.

January 1st, 2016

## Basic Functions

- Print and view of AFP forms in all orientations.
- Viewing of AFPDS formatted documents, generated by products like DCF, ACIF or *Papyrus DocEXEC*.
- Provides ACIF TLE index search.
- Background printing to local PCL printer.
- Utilizes the AFP bitmap and outline font for viewing and printing in 240/300/ 600 dpi.
- Optional MS-TrueType or Adobe Type 1 fonts for viewing.
- Printing single pages or whole documents via PCL.
- Integration with archive products or user applications via standard DDE commandline controls or Plug-In technology.

## Extended Functions

- Filling of predefined PAGEDEF data fields into the form.
- Texteditor enables text input and maintenance by the user.
- *Papyrus DocEXEC* integration for interactive document formatting with user prompting.
- Dynamic Dialog Interface.
- Standard Database interface DLL.
- Host access user specific.
- Document Management Interface.
- DDE or Plug-In integration for Windows.
- With *Papyrus WebRepository*, an event controls the input queue and sends documents to *Papyrus Client* for viewing, printing and document processing.
- Available as web browser plug-in.

## Papyrus Client/E-mail

Offers to distribute the *Papyrus AFP Viewer* per e-mail for viewing attached AFP document files.

## Papyrus Desktop

The Desktop of *Papyrus Objects* provides an easy-to-use interface for the authorized end-user to access central and distributed services such as letter libraries, print servers, central printers and archives. The *Papyrus Client* can be tightly integrated into the Desktop using the same Plug-In technique like an Internet Browser. The same Desktop is used by the administrator and the end-user.

## Benefits

- Integrate the host and PC world using IBM MO:DCA.
- Forms selection from databases, FormsFill and printing on standard local PC printers.
- Reduction of variable operating expense through the usage of identical forms on host, servers and PC printers.
- Reuse of developed forms for Forms-Fill applications without printing.
- Provides a corporate-wide forms and document infrastructure.
- Enforces a corporate identity.
- Index search by key words.
- Full text search.
- "send to" option for FTP and e-mail.

## Prerequisites

- Windows 2K/XP/2K3/VISTA/2K8/7
- Pentium IV or higher
- 512 MB RAM (1 GB recommended)
- A resolution of 1024x768 with 256 colors is recommended.
- Forms and resources should be installed on a LAN server for productive use or via *Papyrus WebRepository*.
- The file server functionality can be supplied by any network and server operating system.
- Server formatting and print processing can only be done through the *Papyrus Server* on Windows 2K/XP/2K3/VISTA/2K8/7 or UNIX.
- Printing through a Windows printer driver can be done with standard LAN server functionality.

## Order Information

### *Papyrus Client/Basic*

for Windows 2K/XP/2K3/VISTA/2K8/7

- AFP document viewing and printing
- AFP to PCL printing (up to 20 pages/minute)

### *Papyrus Client/Extended*

for Windows 2K/XP/2K3/VISTA/2K8/7

- AFP document viewing and printing
- AFP to PCL printing (up to 20 pages/minute)
- FormsFill
- DocEXEC (100 pages per document)
- Texteditor and Prompting
- Web Browser plug-in
- *Papyrus Desktop*

### Optional available Feature:

- Proximity Spellcheck and Hyphenation for 17 languages
- PDF output

## Training

ISIS offers in-house workshops and standard courses for user training.

## Maintenance

The Terms and Conditions for ISIS Software Products apply. Free service period is 6 months after installation. A maintenance agreement is offered optionally for updates and hotline.